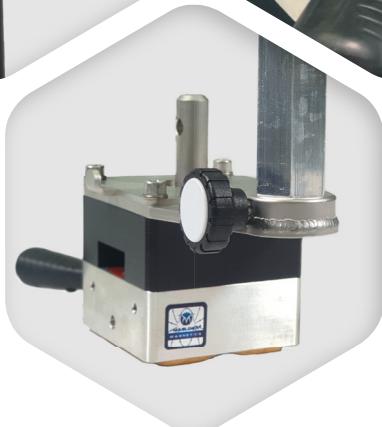
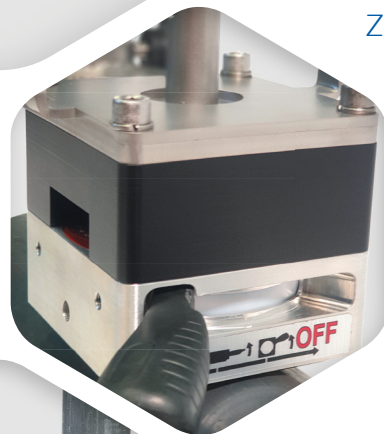


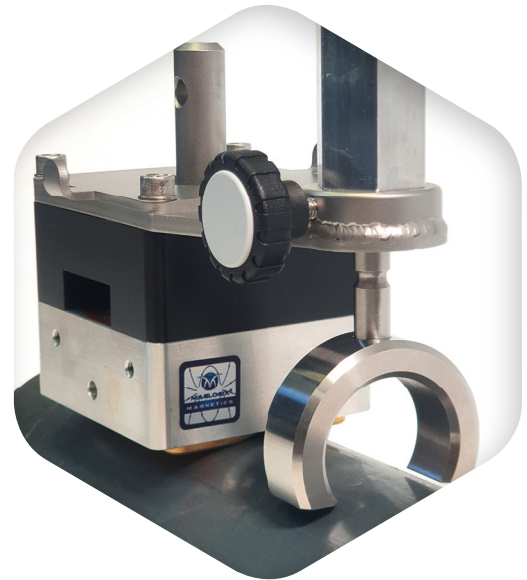
Magnetsystem 300

zum Set erweiterbar

- Schaltmagnet mit bis zu 300 kg Zugkraft
- Basisaufbau und Stift für Kollimatorhalterung
- Stift stufenlos verstellbar
- Erweiterung zu Magnetsystem 300 Set L2 und L3 möglich
 - L2: Plus Gelenkarm (inkl. Zentralarm)
 - L3: Plus Spannzange, Spanngummi und Koffer
- Individuell zusammengestellte Sets auf Anfrage möglich



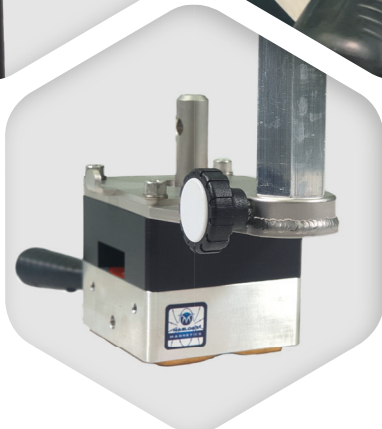
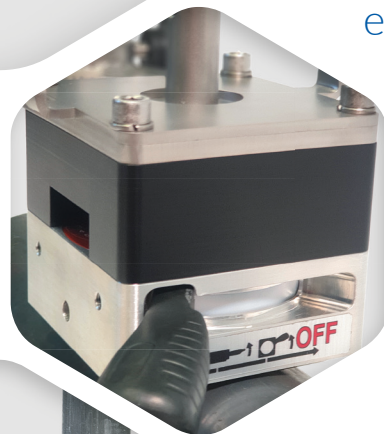
* ohne Kollimator und -Halterung



Magnetsystem 300

expandable to a set

- Switchable Magnet with up to 300 kg pulling force
- Base assembly and pin for collimator retaining ring
- Pin infinitely adjustable
- Extension to magnet system 300 set L2 and L3 possible
 - L2: Plus articulated arm (incl. central arm)
 - L3: Plus collet, bungee cord and case
- Individually compiled sets possible on request



* without collimator and -fitting